



**GEOTECH
SOLUTIONS**

Solutions for sustainable Development

COMPANY PROFILE

2023

WHO WE ARE

Geotech Solutions (U) Ltd is a leading Ugandan engineering consultancy company founded in 2009. With a strong focus on sustainable development, we provide a comprehensive range of services including engineering consultancy, geotechnical investigations, materials testing, surveys, environmental and social management, project designs, planning, and management.

As an ISO 9001 and OHSAS 18001 certified company, we are committed to delivering timely and efficient solutions to our clients in the Great Lakes region, including Uganda, Rwanda, Burundi, Sudan, and Congo.

VISION STATEMENT

To be the trusted partner for sustainable engineering solutions, driving positive change and contributing to the development of thriving communities in the Great Lakes region and Africa.

MISSION STATEMENT

Our mission is to provide exceptional engineering consultancy services, utilizing our expertise and advanced technology, while prioritizing the health, safety, and environmental aspects of our projects. We strive to exceed client expectations through innovation, integrity, and a commitment to sustainable development.



DANGER
WORK AT HEIGHT

294

CORE VALUES

Excellence

We consistently deliver high-quality solutions & services, exceeding industry standards.

Sustainability

We promote environmentally responsible practices and contribute to the long-term development of communities.

Integrity

We conduct our business with honesty, transparency, and ethical behaviour.

Collaboration

We foster strong partnerships with clients, stakeholders, and our team, working together to achieve shared success.

Professionalism

We uphold the highest standards of professionalism, competence, & continuous learning.

OUR OBJECTIVES

- Continuously improve our technical expertise and stay updated with industry advancements.
- Foster long-term client relationships based on trust, reliability, and exceptional service.
- Expand our market presence and increase our footprint in the Great Lakes region.
- Attract & retain top talent, providing a conducive work environment for professional growth and development.
- Contribute to sustainable development by integrating environmental and social considerations into our projects.

OUR GOALS



Short-term goals

- ▶ Enhance client satisfaction by delivering projects on time and within budget.
- ▶ Strengthen our laboratory capabilities and invest in the latest equipment and technology.
- ▶ Expand our service offerings to meet evolving client needs and industry



Long-term goals

- ▶ Establish Geotech Solutions as the premier engineering consultancy in the Great Lakes region.
- ▶ Develop strategic partnerships with international firms to enhance our capabilities and access to global best practices.
- ▶ Contribute to the development of infrastructure that supports sustainable economic growth in the region.

MESSAGE FROM THE MANAGING DIRECTOR

Dear Team

Embracing Growth and Sustainability in FY 2023/24

As we embark on the new fiscal year 2023/24, I want to take this opportunity to express my gratitude for the collective efforts that have made Geotech Solutions (U) Ltd a trusted partner for sustainable development in the Great Lakes region. Together, we have achieved remarkable milestones, strengthened our capabilities, and upheld our commitment to excellence.

Looking ahead, it is essential for us to embrace growth while staying true to our core values. Our success lies in our ability to adapt to the evolving needs of our clients and the dynamic industry landscape. With this in mind, I would like to share our vision and key focus areas for FY 2023/24.

1. Emphasizing Sustainability

Sustainable development has been the cornerstone of our operations, and it will continue to guide our actions in the coming year. Let us continue to integrate environmental and social considerations into our projects, champion responsible practices, and contribute to the long-term well-being of the communities we serve.

2. Enhancing Technical Expertise

In a rapidly changing industry, it is imperative that we stay at the forefront of technological advancements and industry best practices. Let us invest in continuous learning and professional development, ensuring that our team remains highly skilled and capable of delivering innovative solutions that exceed client expectations.

3. Strengthening Client Relationships

Our clients are at the heart of our success, and building strong and lasting relationships is paramount. Let us deepen our understanding of their needs, communicate effectively, and consistently deliver exceptional service. By being a trusted advisor and reliable partner, we can nurture long-term collaborations and unlock new opportunities.

4. Expanding Our Market Presence

While we have made significant strides in the Great Lakes region, there is still untapped potential and emerging markets waiting to be explored. Let us strategically expand our market presence, leverage our reputation, and identify growth opportunities that align with our expertise. By broadening our horizons, we can diversify our client base and solidify our position as a leading engineering consultancy firm.

5. Fostering Collaboration and Innovation

Our success is the result of our collective efforts. Let us continue to foster a culture of collaboration, where diverse perspectives are valued, and teamwork thrives. Encourage open communication, share knowledge, and embrace innovative ideas that drive efficiency and add value to our clients' projects.

As we pursue our goals for FY 2023/24, I am confident in our collective abilities and unwavering commitment to excellence. Together, we will navigate challenges, seize opportunities, and deliver sustainable engineering solutions that make a positive impact on the communities we serve.

Thank you for your dedication, professionalism, and unwavering support. I look forward to another successful year, filled with growth, meaningful accomplishments, and shared success.

With Regards

Mr. John Bosco Lubega
Managing Director
Geotech Solutions (U) Ltd



OUR SERVICES

Engineering Consultancy Services

We provide comprehensive engineering consultancy services, leveraging our expertise in various disciplines including water engineering, highway engineering and foundation engineering to deliver innovative solutions tailored to our clients' needs. Our experienced team collaborates closely with clients throughout the project lifecycle, ensuring efficient and cost-effective outcomes.

Geotechnical Investigations & Materials Testing

Our geotechnical investigations and materials testing services help clients assess soil conditions, evaluate foundation design, and ensure the quality and durability of construction materials. Using project lifecycle, ensuring efficient and cost-effective outcomes.

Geological, Hydrological, Topographical Surveys

We conduct detailed surveys to gather essential data on geological features, water resources, and topographical characteristics. Our surveys enable clients to make informed decisions and design projects with a thorough understanding of the terrain and environmental factors.

Geophysical Surveys

Using advanced geophysical techniques, we provide comprehensive surveys to detect subsurface features, identify potential risks, and assess ground conditions. Our geophysical surveys aid in mitigating geological hazards and optimizing project planning. environmental factors.

Environmental & Social Management

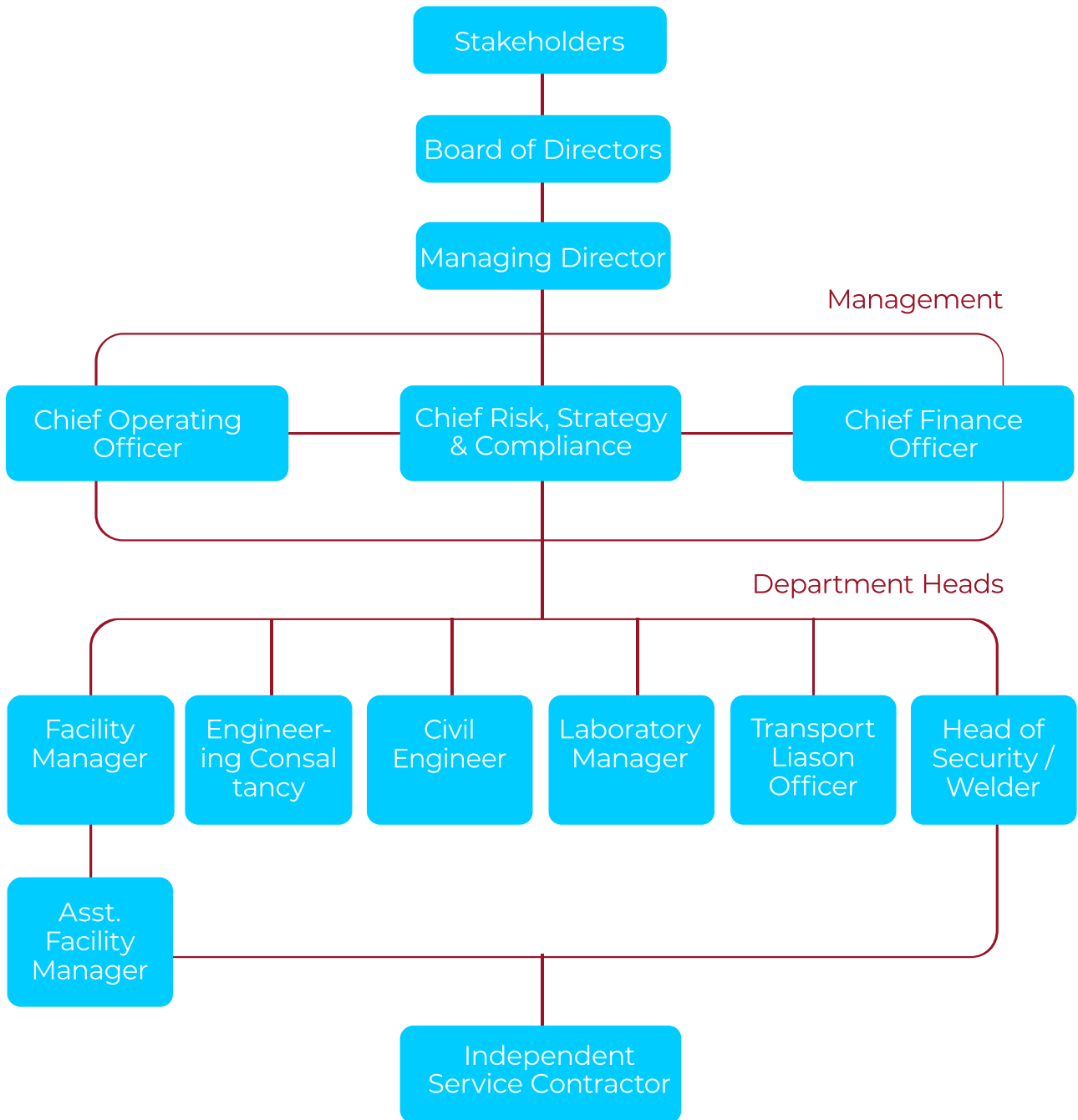
We offer expert environmental and social management services to ensure compliance with national and international standards. By assessing and mitigating potential environmental and social impacts, we help clients achieve sustainable development goals and maintain positive stakeholder relations.

Project Design, Planning, and Management

We offer expert environmental and social management services to ensure compliance with national and international standards. By assessing and mitigating potential environmental and social impacts, we help clients achieve sustainable development goals and maintain positive stakeholder relations.

OUR TEAM

Our company is led by the Managing Director joined with a team of members as per the organization structure below;



MARKET & CLIENTS

Geotech Solutions (U) Ltd operates primarily in the Great Lakes region, including Uganda, Rwanda, Burundi, Sudan, and Congo. We have a deep understanding of the local market dynamics, regulations, and challenges, allowing us to provide tailored solutions that align with regional needs.

We serve a diverse range of clients, including government agencies, private corporations, developers, contractors, and international organizations.

Our client base includes those involved in;

- ▶ Infrastructure development
- ▶ Construction
- ▶ Mining
- ▶ Energy
- ▶ Agriculture
- ▶ Environmental Management

The following are some of our clients over time



OUR CLIENTS

No	Company
1	China International Water and Electric Corporation CWE
2	Ministry of Water and Environment- Water for Production North
3	JICA study team
4	Samta Mines and Minerals (Uganda) Limited
5	LC & Partners Project Management and Engineering
6	VMK Mining Resources Ltd Uganda
7	Zenitaka-Hyundai JV for New Nile Bridge in Jinja
8	Intec Gopa International Energy Consultants Gmbh
9	Hydro China Huadong Corporation
10	STRABAG International GmbH
11	National Contracting Company
12	Kalpataru Power Transmission Ltd
13	Gauff Ingenieure Gmbh
14	LEA CONSULTANTS/UNRA
15	NGALI Energy Rwanda
16	Oro Verde Ltd (ASX: OVL)
17	SMEC International Pty Ltd
18	Salini Costruttori SpA
19	SBI International Holdings
20	Mecamidi S.A of France
21	Kimani Minerals(T) Ltd
22	KEC International
23	LARSEN &TOUBRO LIMITED (Power Transmission and Distribution)



LABORATORY TEST & EQUIPMENTS

a) Laboratory Tests

At Geotech Solutions (U) Ltd, our well-equipped materials laboratory serves as the backbone of our accurate and reliable testing services. Utilizing advanced testing techniques and adhering to international standards, our laboratory conducts a wide range of tests to evaluate the quality, strength, and durability of construction materials. With our commitment to precision and efficiency, we ensure that our clients receive comprehensive and trustworthy results for informed decision-making.

Sr. No	Name of Test	Test Methods
1.0 TESTS ON SOILS AND GRAVEL		
1.1	Sampling	BS 1377:Part 2:1990
1.2	Particle size distribution-wet sieving	BS 1377:Part 2:1990
1.3	Particle size distribution-hydrometer method	BS 1377:Part 2:1990
1.4	Moisture content	BS 1377:Part 2:1990
1.5	Atterberg limits (LL, PL, PI)	BS 1377:Part 2:1990
1.6	Linear shrinkage	BS 1377:Part 2:1990
1.7	Compaction test-BS light and BS heavy	BS 1377:Part 4:1990
1.8	CBR test-one point method	BS 1377:Part 4:1990
1.9	CBR test-three-point method	BS 1377:Part 4:1990
1.10	Consolidation test-oedometer	BS 1377:Part 5:199
1.11	Tri-axial test (UU, CU and CD)	BS 1377:Part 7:1990
1.12	Shear box test	BS 1377:Part 7:1990
1.13	Permeability test-constant head	BS 1377:Part 5:1990

1.14	Organic content-ignition loss method	BS 1377:Part 3:1990
1.15	Crumb test	BS 1377:Part 5:1990
1.16	PH. Value (PH meter)	BS 1377:Part 3:1990
1.17	UCS of stabilized materials	BS 1924:Part 2:1990
1.18	Field density-sand replacement method	ASTM D1556, BS 5930:2015
1.19	Moisture content of aggregates	BS 812: Part 109:1990

2.0 TESTS ON AGGREGATE AND CONCRETE

1.1	Sampling	BS 812: Part 109
1.2	Moisture content of aggregates	BS 812: Part 109:1990
1.3	Relative density and water absorption	BS 812: Part 2
1.4	Sieve test on aggregates	BS 812: Part 103.1
1.5	Flakiness index (FI)	BS 812: Section106.1
1.6	Elongation index	BS 812: Section106.2
1.7	Aggregate crushing value (ACV)	BS 812: Part 110:1990
1.8	Ten percent fines value (TFV)	BS 812: Part 111:1990
1.9	Aggregate impact value (AIV)	BS 812: Part 112:1990
1.10	Los angles abrasion value (LAAV)	ASTM C535-89
1.11	Sodium sulphate soundness (SSS)	ASTM C88-90
1.12	Slump test of fresh concrete	BS 1881: Part 102
1.13	Making of concrete test cubes	BS 1881: Part 108
1.14	Concrete cube strength	BS 1881: Part 116

b) Laboratory Equipment

Geotech Solutions (U) Ltd boasts a well-equipped materials laboratory. Our laboratory is equipped with state-of-the-art tools and instruments to conduct a wide array of tests in accordance with the ASTM, BS, EU and other applicable standards, ensuring the highest standards of accuracy and reliability.

Our laboratory equipment empowers our skilled technicians to deliver precise and detailed results.

We continually invest in upgrading our equipment to stay at the forefront of technological advancements, enabling us to provide cutting-edge solutions and meet the evolving needs of our clients.

Direct Shear testing machine



Automated Consolidation Test Equipment for consolidation testing.



Equipment

Photo

Tri-axial test machine
(For effective stress
measurement.)



Test sieves used in
grain size distribution
for soil classification
testing.



Cone Penetrometer &
Casagrande machines
used to determine the
Liquid limit of soil.



Equipment

Photo

200 Liter capacity
Oven for sample
drying.



100-liter capacity
oven at the Laboratory
used for moisture
determination and
drying of samples



Automatic Compressive
Testing Equipment for
testing of Concrete
Cubes, Blocks, Cement,
Rocks etc.



Equipment

Photo

Oedometer Test equipment used for one dimensional consolidation testing in the Laboratory.



Point Load Strength Machine used to determine strength of rocks.



Multi Speed CBR test machine owned by the company.



c) Field Equipment

Geotech Solutions (U) Ltd takes pride in maintaining a state-of-the-art fleet of field equipment that enables us to conduct surveys and investigations with utmost precision and efficiency. From cutting-edge geophysical instruments to advanced surveying tools, our field equipment empowers our experienced team to gather accurate data, assess ground conditions, and identify potential risks. With our cutting-edge equipment, we deliver timely and reliable field services that meet the diverse needs of our clients.

The company owns a fleet of field exploration machinery with geotechnical drilling rigs which have capability to undertake soil and rock drilling up to 3000m depth.

SYSCAL Pro resistivity
& IP equipment



Downhole/Cross hole
Test Equipment



Earth Resistivity Meter
PASI MOD. 16GL-N



Equipment

Photo

Desco SP 3500SA
rotary drilling rig able
to reach 3000m.



Beretta WL219
Hydraulic Drilling Rig



Dando Terrier
Percussion drilling rig.



Equipment

Photo

HT 260 Rotary drilling rig capable of drilling up to 260m.



Water Level Meter to be used in Water level monitoring.



Envo 20 Ton Cone Penetration Testing Machine.



GeoMil Cone Penetration Testing (CPT) Truck.





PROJECT EXPERIENCE

Geotech Solutions (U) Ltd has successfully undertaken a wide range of projects across various sectors. From major infrastructure developments to small-scale ventures, our portfolio showcases our expertise, dedication to quality, and commitment to sustainable development.

YEAR 2023

Project name	Client	Activities	Contract Period	References
Labor supply for construction works for Tilenga project Schlumberger Drilling Support Base in Buliisa District near Lake Albert	National Contracting Company	Road construction, Culvert construction	May 2022 to July 2023	Ms BRENDA SANKARA DIRECTOR +256 774334858/ 256 753555774 brenda@nyikacapital.com
Slope stabilization works (Design & Construction) at Bujagali Energy Limited	Orascom Construction	Trial Pit Excavation, Core drilling, in-situ tests, Laboratory Testing and Reporting	October 2022 to February 2023	Alaister McDougall General Manager Bujagali Energy Limited Mobile: +256 707 431 828
CPTu testing and soils testing at right embankment Isimba dam	China Water and Electric Corporation	Surveying, mapping, design and construction works for slope stabilization works at Bujagali	May 2023	Mr. Cui Yanbin Email: 327439634@qq.com Tel: +256789502915
Independent laboratories testing Total Energies	Total E & P Uganda	CPT testing, drilling & core sampling, piezometer installations, soils testing and reporting	January 2023	Mr. Walter Yondi Email: walter.yondi@totalenergies.com Tel: +(256) 760 888 045
Service agreement for labor provision at Bujagali Energy Limited	Bujagali Energy Limited Bel	Labor provision for maintenance works	May 2023 to July 2023	Alaister McDougall General Manager Bujagali Energy Limited Mobile: +256 707 431 828

YEAR 2022

Project name	Client	Activities	Contract Period	References
SubContractor: Engineering, design, construction & installation of 132 KV Mutundwe Entebbe Transmission Line	National Contracting Co. Ltd	Construction of Access Road for swampy areas & including mobilization and demobilization, supervision, manpower & operation cost	17th February 2022 to	Mr Suresh Babu NCC Construction manager Suresh.babu@nccprojects.in
Sub Contractor: Engineering, design, construction and installation of 132 KV Mutundwe Entebbe Transmission Line	National Contracting Co. Ltd	Platform arrangement with murrum dumping & compaction in swampy locations 10/3, 10/4 & 12D	22nd February 2022 to	Mr Suresh Babu NCC Construction manager Suresh.babu@nccprojects.in
SubContractor: Engineering, design, construction and installation of 132 KV Mutundwe Entebbe Transmission Line	National Contracting Co. Ltd	Construction of Pad & Chimney foundations 10/2, 11/1, 12A and 12B		Mr Suresh Babu NCC Construction manager Suresh.babu@nccprojects.in
Construction of fifteen hydrological field stations in Uganda and one in DRC	Nile Basin Initiative	Surveying, procurement, construction and remediation works.		Mr DIDACE RWABITEGA drwabitega@nilebasin.org
Geotechnical Investigations for 132/33 kV OHTL Gulu Agago Transmission Line	KEC International	Vertical Electrical Sounding Testing, Borehole Drilling, Trial Pit Excavations, DPL Testing + Laboratory Testing	Jan 2022 to Dec 2022	Mr. Vaibhav Jayade Email: jayadev@kecrpg.com Contact: +256740092909
Geotechnical Investigations for Ayilla and Acwa Irrigation Schemes	WAPCOS (U) Ltd	Geological Mapping, Electrical resistivity topography and Seismic refraction, Borehole Drilling, Trial Pit Excavations + Laboratory Testing	May 2022 to June 2022	Mr. Girish +256754680818
Geotechnical Investigations for Namalu and Unyama Large Scale Irrigation Schemes	Ministry of Water and Environment- Water for Production North	Geological Mapping, Electrical resistivity topography and Seismic refraction, Borehole Drilling, Trial Pit Excavations + Laboratory Testing	June 2022 to October 2022	Mr. Bwire Charles +256777733322 Email: charlobwire@gmail.com
Geotechnical Investigations Report for Foundation Design of Water Structures in Karuma.	SOGEA SATOM Uganda	Borehole Drilling Testing + Laboratory Testing	November 2022 to December 2022	Mr. MAINA Cyrus cyrus.maina@vinci-construction.com + 256784258226

YEAR 2021

Project name	Client	Activities	Contract Period	References
Downstream Slope Slip Remedial Works at Bujagali Power Station Phase 1 in Uganda	Bujagali Energy Limited	Creation of an access to the slope slip area + Restoration of the slip area to ensure a protected riverbank	December 2020 to February 2021	Alaister McDougall General Manager Bujagali Energy Limited Mobile: +256 707 431 828 P.O. Box 186, Jinja, Uganda
Upgrading of Jinja Mbulamuti- Kamuli-Bukungu Geotechnical	SOGEA SATOM Uganda	Dynamic Cone Penetration, DCP, Testing and Reporting	February 2021	Christian Razanatsimandresy SOGEA SATOM Uganda Plot 78, Luthuli Av., Bugolobi, Kampala Mobile: +256 771 006 520 Mail: christian.razanatsimandresy@vinci-construction.com
Geological survey (PS logging) for Detailed design on Kampala flyover construction and road upgrading project	Shimizu Corporation, & Kanoike Construction Co. Ltd, JV	Geological survey (PS logging) and GPR survey	May 2021 to June 2021	Mr. Kentaro Okunu +256705444949 Email: okuno-kn@n-koei.jp
Geophysical Investigations for Quarry site for Apac-Lira- Puranga Road Construction Project	GÜLSAN A.S. INSAAT SANAYI TURIZM NAKLIYAT VE TICARET	Electrical resistivity tomography and Seismic refraction	February 2021 to March 2021	Mr. Burak KIZIROĞLU Project Manager – Construction burak.kiziroglu@gulsanholding.com Tel: +256780439071
Geotechnical Investigations for TN 205 Burundi LI 220 kV DC (6.7km) and SC (65.6km) OHTL from Kabezi SS to Horezo SS Tower Schedule Check Surveys	KEC International	Vertical Electrical Sounding Testing, Borehole Drilling, Trial Pit Excavations, DPL Testing + Laboratory Testing	January 2021 to January 2023	Mr. Sarvesh kumar Gupta Email:guptasv@kecrpg.com Contact: +257 67099658
Geotechnical Investigations for Design of Agago Substation and Agago Hpp	Larsen & Toubro Limited (Power Transmission & Distribution)	Vertical Electrical Sounding Testing, Borehole Drilling, Trial Pit Excavations, DPL Testing + Laboratory Testing	September 2021 to October 2021	Mr. GANESH BABURAO TORNE Email: ganesh.torne@Intecc.com
Plant Design, Supply and Installation of 132/133KV Substations at Gulu, 132KV Switching station at Kole and 33KV Powerline Interconnectors	Eastern Africa Mineral Resource Ltd	Shear Wave Velocity Testing Plate Load Testing	December 2020 to January 2021	Allan Nuwagaba Project Engineer Eastern Africa Mineral Resource Ltd Plot 724 Namanve, Mukono Email: nuwagabaallan810@gmail.com
Diamond Core Drilling in Zombo	Samta Mines & Minerals (Uganda) Limited	5000m Diamond Core Drilling	November 2020 to date	Mr. Rohit Loya Email: rohit.loya@samta.net Samta Mines & Minerals (U) Limited Plot No. 1B PKF Building, Kira Road P.O. Box 36857, Kampala-Uganda.

Project name	Client	Activities	Contract Period	References
Onshore Soil Investigation Services at the Tilenga Central Processing Facility Area	Total E&P Uganda B.V.	Cone Penetration Testing (CPT)+ Borehole Drilling + Trial Pit Excavation + Soil Resistivity Testing + Laboratory Testing	October 2020 to January 2021	Mr. Walter YONDI e-mail: walteryondi@total.com +256794888045 Course View Towers Plot 21, Yusuf Lule Road,
Geotechnical investigation for Feasibility Study and Detailed Engineering Design for Kazo-Buremba-Kabagole- Kyegegwa Road (82 km)	GFS Engineering Services Limited	Borehole Drilling + Trial Pit Excavation + Dynamic Penetration, DPL, Testing + Laboratory Testing	December 2020 to February 2021	Eng. Betty Nakamya Director GFS ENGINEERING SERVICES LIMITED P.O. Box 40108, Kampala. Tel: +256(0)751 771 786. Email: gfslaboratory@gmail.com
Geotechnical Investigations Report for the Feasibility study and Detailed Design of Four (04) Selected National Roads	LEA CONSULTANTS /UNRA	Core drilling + Lugeon testing + Test Pitting + Laboratory testing + Reporting	Jan 2021 to June 2021	Mr. Devendra Kafaltiya Email:devkafaltiya@gmail.com Contact: +256760535610
TOTAL Independent Lab	Total E & P Uganda	Field tests and Laboratory test analysis e.g., FDT, DCP, CPT, and borrow pits investigation and sampling for lab physical tests	2021 to date	Mr. Walter Yondi Email: walteryondi@totalenergies.com Tel: +(256) 760 888 045
Geophysical Investigations for the proposed Quarry development for Atiak-Laropi Road Project	STRABAG International GmbH	Borehole Drilling Testing + Laboratory Testing	October 2019 to June 2020	Philip Patemann Business Unit Sub-Saharan Africa STRABAG International GmbH Siegburger Straße 241 50679 Köln Mobil: +27 72 386 5476 Mail: philip.patemann@strabag.com Web: www.strabag.com
Geophysical Investigation of the Jiji and Mulembwe Hydropower Plant Project in Burundi	ORASCOM	High resolution seismic reflection + Shallow seismic refraction and Multichannel analysis of surface waves + Electrical resistivity tomography	June 2019 to March 2020	Ashraf R. Roushdi Project, Director ORASCOM CONSTRUCTION Nile City South Tower (22nd Floor),
Geotechnical Investigation, Topographical Survey, Hydrogeological investigation - UGANDA - ALBERTINE GRABEN	SAIPEM SpA	Cross Hole Testing and Vertical Electrical Surveying, VES, Geophysical Investigations	January 2019 to August 2020	Mazzocca Luca Luca.Mazzocca@saipem.com San Donato Milanese (MI) Via Martiri di Cefalonia, 67 20097 San Donato Milanese (MI)
Geotechnical Investigation Services for the Design and Construction of 132KV Mutundwe – Entebbe	National Contracting Company	Trial Pits Excavation (62 No.), Core drilling (20 No.), in-situ tests, Laboratory Testing and Reporting	April 2019 to May 2019	Mr Ravi Channdran Project Manager +256707777373
Soil Investigation Services Enabling Infrastructure Trial Pits (273 No.) and Core Drilling	TOTAL E&P Uganda B.V.	Trial Pits + Core drilling + in-situ tests + Laboratory Testing + Reporting	July 2018 to January 2019	Mr. Olivier DE-PELLEGARS e-mail : olivier.de-pellegars@total.com +256 794 888 045 Course View Towers Plot 21, Yusuf Lule Rd, P.O. Box 34867, Kampala - Uganda


Project name	Client	Activities	Contract Period	References
Settlement and Pore Water Measurement for the Development of Kabaale International Airport	SBI Uganda	Installation of Vibrating Wire Piezometers & Magnetic Extensometers to measure Settlement and Pore Water pressure	December 2018 to February 2020	Slobodan Blagojević Technical Manager slobodan@sbi.co.ug Tel: +256 776 708 031
Tin Mineral Exploration in Kikagati (200m)	VMK Mining Resources Ltd	Diamond Core Drilling	July 2019	Mr Manoj +918074537749
Supplementary Geotechnical Investigations for the International Specialized Hospital in Lubowa	LC & Partners Project Management and Engineering	Core drilling, in-situ tests, Cone Penetration Testing (CPT), Laboratory Testing and Reporting	July 2019 to August 2019	Ugo Gali Technical Director East Africa LC & Partners Project u.galli@lcandpartners.com Tel: +256770825179 Management and Engineering
Construction of New Nile Bridge at Jinja in Uganda	Zenitaka – Hyundai Joint venture for New Nile Bridge in Jinja	Project Surveying Services, Pile trimming, grouting, small civil construction works	February 2015 to March 2019	Ishikawa Masami Acting Project Manager ishikawa_masami@zenitaka.co.jp +256 771 269 466
Geotechnical investigation of the Jiji and Mulembwe Hydropower Plant Project in Burundi	ORASCOM	Core drilling + Lugeon testing + Test Pitting + Laboratory testing	June 2019 to March 2020	Ashraf R. Roushdi Project Director ORASCOM CONSTRUCTION Nile City South Tower (22nd Floor), 2005A Corniche El Nil, Cairo, Egypt ashraf.raafat@orascom.com
Feasibility Study for Kakono Hydropower Project in North Western Tanzania along the Kagera River	Studio Pietrangeli	Core drilling + Lugeon testing + Test Pitting + Laboratory testing + Reporting	October 2018 to January 2019	Luca Sicilia Studio Ing. G. Pietrangeli S.r.l. Via Cicerone 28 – 00193, Rome (Italy)
Geophysical investigations at oil well pads and feeder line for Tilenga Project in the Albertine Region of Uganda	TOTAL E&P Uganda B.V.	High resolution seismic reflection+ Shallow seismic refraction & Multichannel analysis of surface waves + Electrical resistivity tomography + Shallow ground electromagnetics	October 2017 to April 2018	Mr. Olivier DE-PELLEGARS e-mail : olivier.de-pellegars@total.com +256 794 888 045 Course View Towers Plot 21, Yusuf Lule Road, P.O. Box 34867, Kampala - Uganda
Geophysical Investigations for Kabaale Airport in the Albertine region of Uganda	SBC Uganda	Geophysical Investigations – Electrical Resistivity Tomography (ERT)	March 2018 to May 2018	Slobodan Technical Manager slobodan@sbi.co.ug Tel: +256 776 708 031
Consultancy Services for Geohazard Risk Assessment to Rukarara 1 HEP in Rwanda (REF: 29/NE/2016)	NGALI Energy - Rwanda	Geology/ Soil characteristics + Topography + Climate + Drainage + Geophysical Investigations – Electrical Resistivity Tomography (ERT)	March 2017 to August 2019	Rugwe John

Project name	Client	Activities	Contract Period	References
Geophysical Investigations for Kikagati Hydropower Project in Western Uganda	SBI International Holdings	Geophysical Investigations – Electrical Resistivity Tomography (ERT)	October 2017 to November 2017	Slobodan Blagojević Technical Manager slobodan@sbi.co.ug Tel: +256 776 708 031
Seismic refraction survey at the damsite for Isimba Hydropower Project in Kayunga/ Kamuli Districts of Uganda	Kagga & Partners	Seismic Refraction survey at dam site involving: - Profile setting out+ Sourcing of explosives +Reporting	March 2011 - June 2011, and November 2010	Peter Magambo Managing Director peter.magambo@kaggapartners.com Tel: +256 782 961 487
Siphon Spillway Slide Gate Repair works – Bujagali Hydropower Project in Uganda	Salini Costruttori S.p.A	Civil and mechanical repair works	Jan 2015 – May 2015	Tesfaye Country Manager a.tesfaye@salini-impregilo.com +256 788 682 492
Feasibility Study for Keere Small Hydro Power Project in Mount Elgon region of Eastern Uganda	Newplan Limited	Core drilling + Lugeon testing + Test Pitting + Laboratory testing+ Reporting	August 2016 to September 2016	Lawrence Omulen Tel: +256 772 780 000 P.O. Box 7544 Kampala
Feasibility Study for Ngoryomwo Small Hydro Power Project in Mount Elgon region of Eastern Uganda	Newplan Limited	Core drilling + Lugeon testing + Test Pitting + Laboratory testing+ Reporting	August 2016 to September 2016	Lawrence Omulen Tel: +256 772 780 000 P.O. Box 7544 Kampala
Feasibility Study for Kabuyanda Multipurpose Water Project in Isingiro District, Western Uganda	Studio Pietrangeli	Core drilling + Lugeon testing + Test Pitting + Laboratory testing+ Reporting	May 2016 to June 2016	Luca Sicilia Studio Ing. G. Pietrangeli S.r.l. Via Cicerone 28 – 00193, Rome (Italy)
Geotechnical Investigations at swampy areas and Bridge areas along Mukono Katosi Road	SBI International Holdings	Augering + Core drilling + Extraction of disturbed and undisturbed samples + Laboratory Testing + Reporting	September 2015 to March 2016	Slobodan Technical Manager slobodan@sbi.co.ug Tel: +256 776 708 031
Geotechnical Investigations on Kawanda Masaka Transmission Line	KEC International	Drilling in swamp areas+ Standard Penetration Tests (SPT), Sample recovery, Cone Penetration tests (CPTu) +Dynamic Cone Penetration Tests (DCPTs) + Reporting	May 2015 to March 2016	Kalpesh Shah Country Manager shahk@kecrpg.com +256 751 192 133
Feasibility Study for Kyambura Small Hydro Power Project in Western Uganda	Mecamidi S.A of France	Core drilling + Lugeon testing + Test Pitting + Laboratory testing + Water level monitoring + Reporting	July 2014 to October 2014	Thibaut Delachat, Project Co-ordinator thibaut.delachat@mecamidi.com 29 chemin de Saint Amand, 31100 Toulouse, France

Project name	Client	Activities	Contract Period	References
Geotechnical Site Investigations and Laboratory Analyses for Lower Songwe Dam in Tanzania and Malawi	Kimani Minerals (T) Ltd	Permeability testing	October 2014 – May 2015	Samuel Gwamaka Managing Director samuelmafwenga@gmail.com +255 7588 074 630
Soil Investigations along Mutundwe-Entebbe 132kV Power Transmission Line and Related Substation Works	Intec Gopa International Energy Consultants GMBH	Core drilling + In-situ testing + Test Pitting + Laboratory testing + Water level monitoring + Reporting	July 2014 – September 2014	Amine Kadil Justus-von-Liebig-Str. 1, 61352 Bad Homburg, Germany Phone: +49 (6172) 1791-800; Fax: +49 (6172) 944-9520 Email: info@gopa-intec.de
Geotechnical Survey – Proposed New Aftersales Support Center and Bonded yard at KIBP Namanve for Toyota Uganda	Toyota Uganda	Core drilling + In-situ testing + Test Pitting + Laboratory testing + Water level monitoring + Reporting	October 2014	Mbabazi Mansour (Strategic Projects Manager) +256 772 837 188 Email: mmbabazi@toyotaug.co.ug Toyota Uganda P.O Box 31732, Kampala - Uganda
Site Investigations at Lake Nyabikere during upgrading of Kamwenge – Fort Portal Road in Western Uganda	Gauff Ingenieure GMBH	Core drilling + In-situ testing + Laboratory testing + Water level monitoring + Reporting	October 2014 – November 2014	Hans-Werner Hill (Resident Engineer) Tel: +256 772 486 530 hwhill@gmx.de Gauff Consultants (U) Ltd P.O. Box 201, Kampala - UGANDA
Repair works at Siphon spill way radial gates at Bujagali Hydro Power Project in Uganda	Operation and Maintenance (O&M Energy)	Civil reconstruction works	September 2014 to Feb 2015	Mr. Marius P.O. Box 1564, Jinja, Uganda, mvanrooyen@omenergy.co.ug Tel.: +256 434132532/3 Fax: +256 332260146, www.gasnaturalfenosa.com
Additional Geological Investigation for the Detailed Design of Karuma Hydropower Project in Uganda	Hydro China Huadong Corporation	Core drilling + Seismic Refraction survey + Lugeon testing + Test Pitting + Laboratory testing + Water level monitoring + Reporting	August 2013 – June 2014	Mr Gao Yue (Project Manager) Tel: +256 781 697 909 Email: gao_y@ecidi.com No. 22 Chaowang Road, Hangzhou, P. R. China
Additional Geological Investigation for the Detailed Design of Isimba Hydropower Project in Uganda	China International Water and Electric Corporation (CWE)	Core drilling + Lugeon testing + Test Pitting + Laboratory testing + Reporting	November 2013 – February 2014	Mr Zhao Xiao (Project Co-ordinator) Tel: +256 785 285 558 Email: zhaoxiaochao@cwe.cn No. Busaana – Kayunga Site Office
Unit 12 remedial works – Intake roof at Kiira Power Station (KPS) in Jinja - Uganda Contract NO: CNT/3/055	Eskom Uganda Limited	Core drilling, chemical grouting, cement grouting, diving, surface repairs	July 2013 – October 2013	Anne Gitta Civil Engineer anne.gitta@eskom.co.ug Tel: +256 772 506 732 Nalubaale Power Station, P.O Box 942 Jinja, Uganda
Geological Investigation at Ayago Hydropower Project site, under the Power Master Plan Study on Hydropower Development in Uganda	JICA Study Team	Ground mapping + Aerial photo interpretation + Core drilling + Lugeon testing + Geodetic measurement + Laboratory	June 2010 - October 2010	Masaaki Nagai, Team Leader of JICA Study Team Yoshitomi_Kogure@jpower.co.jp tel:+81-3-3524-5379 Electric Power Development Co., Ltd. 15-1 Ginza 6-chome, Chuo-ku, Tokyo, 104-8165, Japan

GET IN TOUCH WITH US

Geotech Solutions is located in Uganda with its head office located in Njeru, Jinja District, Busoga sub-region, in the Eastern Region of Uganda. The town is approximately 81 kilometres (50 miles), by road, east of Kampala, the capital and largest city of Uganda.

 +256 777 682 276 / 703 651 396

 info@geotechsolutionsug.com

 geotechsolutionsug.com

 Njeru Municipal Council, Jinja
Plot 531, Block 295,

GEOTECH SOLUTIONS

Solutions for sustainable Development